

# STANDARD SAILING INSTRUCTIONS 2011- 2012

The Organising Authority is Naval Point Club Lyttelton.

## 1.0 Rules

- 1.1 All races will be governed by the 'rules', as defined in the current *Racing Rules of Sailing* except as any of these are changed by these Sailing Instructions.
- 1.2 The YNZ Safety Regulations shall apply. (See Attachment 2 to these Sailing Instructions)
- 1.3 Canterbury Regional Council Harbour By Laws apply. Boats must keep clear of working vessels in the main navigational Channel. Boats that infringe this law shall be liable to disqualification after protest by the race committee.  
Boats are permitted to motor or paddle directly out of the main navigation channel, as marked in Lyttelton Harbour, to comply with this law. This changes rule 42.
- 1.4 A boat shall not discharge rubbish into the water.
- 1.5 For a boat to be eligible to compete in Club non-championship events for points and trophies each person in charge (see RRS 46) shall be a financial member of the NPCL. Casual Crew members of NPCL and current Day Members are eligible to sail as crew.  
These Sailing Instructions must be read in conjunction with the NPCL Eligibility and Entry requirements in Attachments 1 and 3 to these Sailing Instructions
- 1.6 These Sailing Instructions must be read in conjunction with any *Special Regatta Instructions* issued by the Race Committee and available at registration.

## 2.0 Notices to Competitors

Notices to competitors will be posted on the official notice board located at the Club.

## 3.0 Changes to Sailing Instructions

Any change to the Sailing Instructions will be posted before 0930 hours or two hours before the first warning signal, whichever is the earlier, on the day it will take effect, except that any change to the schedule of races will be posted by 1800 hours or the end of protest time, whichever is the earlier, on the day before it will take effect.

## 4.0 Signals Made Ashore

- 4.1 Signals made ashore will be displayed at the Club.
- 4.2 When flag AP is displayed ashore '1 minute' is replaced with 'not less than 30 minutes' in race Signal AP. When flag AP over flag B is displayed boats shall not go afloat, or if afloat, leave their moorings.
- 4.3 Signals flown over a white flag bearing the letter "A", "B" or "C" will apply to classes sailing on courses A, B or C respectively.

## 5.0 Schedule of Races

- 5.1 The schedule of races is included in the Naval Point Club Sailing Programme or *Special Regatta Instructions*
- 5.2 The warning signal for a subsequent race for a [class] [Division] on the same day will be made as soon as practicable but not sooner than 5 minutes after the last boat finishes the previous race for that [class] [Division].

## 6.0 Class or Division Flags

6.1 Division flags for Club events unless changed by SI 6.2 will be:

<b>Division</b>	<b>Flag</b>
Div. 1 Restricted TY	Yellow flag or board
Div. 2 TY up to .810	Green flag or board
Div. 3 TY .811 to .870	Green flag or board
Div. 4 TY .871 and above	Blue and Yellow flag or board
Div. 5 TY Open TY Harbour Race	Blue and Yellow flag or board
Div. 6 All Catamarans	Pink and White flag or board
Div. 7 R. Class, 470, 420	Numeral pennant 7 or board
Div. 8 Monotype Boats, Windsurfers, Sunbursts	Numeral pennant 8 or board
Div. 9 P Class, Optimists, Starling	Numeral pennant 9 or board
Div. 1 Keeler	Tangerine and Blue flag or board
Div. 3 Keeler Non-Spinnaker	Yellow flag or board

6.2 Class Flags for special events are included in *Special Regatta Instructions*

## 7.0 Racing Areas

7.1 The racing area is Lyttelton Harbour and the waters off Banks Peninsula and may be specified in *Special Regatta Instructions*

7.2 Any assignment of classes to racing areas will be made each day by the Race Committee and will be posted on the official notice board no later than 0930 hours, or two hours before the first warning signal, on the day the assignment will take effect. However, when flag AP is displayed ashore the course area may be reassigned at any time before flag AP is lowered.

## 8.0 The Courses

8.1 Courses and starting time will be displayed on Division Entry Sheets in the race area reception of the clubhouse. The diagrams on the course boards or in the NPCL Programme indicate the courses, the approximate angles between legs, the order in which marks are to be passed and the side on which each mark is to be left.

8.2 Courses may be indicated at the stern of the start line committee boat.

8.3 A description of the courses will be included in *Special Regatta Instructions*.

## 9.0 Marks

9.1 Marks are described on the Division course boards or in the NPCL Handbook.

9.2 A race committee boat signalling a change of a leg of the course is a mark as provided in instruction 11.2

9.3 A description of marks will be included in *Special Regatta Instructions*.

## 10.0 The Start

10.1 Races will be started using rule 26 with the warning signal made five minutes before the starting signal, unless changed by *Special Regatta Instructions*

10.2 The shore based starting line will be between a white staff with an orange flag on the Club race control building and a nearby outer starting mark. When the Club burgee is flying from the race control building, race control is manned.

10.3 When starting from a boat the starting line shall be between a staff displaying an orange flag or shape on the Race Committee Boat at the starboard end and the port end starting mark.

- 10.4 A distance mark may be laid between the outer starting mark and the shore or committee boat. Boats must sail between the distance mark and the outer starting mark when starting.
- 10.5 Boats whose warning signal has not been made shall avoid the starting area.
- 10.6 A boat starting later than four minutes after her starting signal will be scored Did Not Start. This changes rule A4.1
- 10.7 When the Race Committee is on the water the time of the second or subsequent start for back to back races for a Division or Class will be signalled by the display of flag L and a notice on a board on the Committee Boat. This instruction will not apply after a general recall or abandonment.
- 10.8 When the race committee is on shore, for back to back races, the warning signal of the first Division to start in a second or subsequent race will be preceded by the display of the orange flag on the white staff on the Club race control building for 4 minutes. This instruction will not apply after a general recall or abandonment.
- 10.9 Designated Mark Foy starts will follow the procedure:
- |                    |        |       |                  |
|--------------------|--------|-------|------------------|
| Warning Signal     | -5 min | Sound | Code Flag T      |
| Preparatory Signal | -4 min | Sound | Code Flag P      |
|                    | -1 min | Sound | Code Flag P down |
| Starting Signal    | 0 min  | Sound | Code Flag T down |
- The Limit boats start on the Starting Signal.  
 After 30 seconds Number 1 is displayed for 30 seconds.  
 Numbers are replaced in sequence at 1 minute intervals. Boats start when their Mark Foy number drops.
- 10.10 Boats in Mark Foy races shall keep clear of the Starting Area prior to the two minutes preceding their start.
- 10.11 In Trailer Yacht, Sport Boat and Keelboat races, if any part of a boat's hull, crew or equipment is on the course side of the starting line at the starting signal and she is identified as OCS, the race committee will attempt to broadcast her sail number on VHF channel 77. Failure to make a broadcast will not be grounds for a request for redress. This changes rule 62.1(a).

## 11.0 Change of Position of Next Mark

- 11.1 To change the position of the next mark, the race committee will lay a new mark (or move the finishing line) and remove the original mark as soon as practicable. The change will be signalled before the leading boat has begun the leg, although the new mark may not yet be in position. Any mark to be rounded after rounding the new mark may be relocated without further signalling to maintain the course configuration. When in a subsequent change a new mark is replaced, it will be replaced by an original mark.
- 11.2 Except at a gate, boats shall pass between the race committee boat signalling the change of course and the nearby mark. This changes rule 28.1

## 12.0 Shortening the Course

- 12.1 A Shortened Course will be signalled at the Finish Line in accordance with Rule 32 and Race Signal "S" except that, in addition, Code Flag "S" over Numeral Pennant 1 may also be displayed by a Race Committee Boat stationed near the rounding mark at the beginning of the last leg to be sailed. Boats shall round the mark and sail directly to the Finish Line, crossing the Finish Line in the direction of the course from the last rounded mark. This changes Rule 32 and Race Signals "S".
- 12.2 A Shortened Course may be signalled to Keelers at all times and Trailer Yachts in long races by VHF message (Ch 77 or Ch 63) without flying Code Flag "S" or making a sound signal. This changes Rule 32 and Race Signals "S".

### 13.0 The Finish

- 13.1 The shore based finish line will be between a white staff on the club race control building and a nearby finishing mark. When the Club burgee is not flying from the race control building the finish line is not manned. Boats finishing should take their own finishing times and report to the Club race office.
- 13.2 When finishing at a race committee boat the finishing line shall be between a staff displaying an orange flag or shape on the boat and the finishing mark at the other end.
- 13.3 After finishing and clearing the Finish Line boats shall keep clear of the Finish Line and of boats finishing.

### 14.0 Time Limits

- 14.1 The time limits for boats which sail the course and finish are as follows:

<b>Race</b>	<b>Time Limit for first boat in each division.</b>	<b>Time Limit for last boat</b>
Keeler Harbour races		4 hours
Keeler Long races	No time limit	
Keeler Sprint and TY		
Short Races	1 hour	20 mins after first boat in Division
TY Harbour races	3.5 hours	60 mins after first boat in Division
TY Long races		6 hours
Dinghy Div. 6, 7, 8, 9	2 hours	30 mins after first boat in Class

- 14.2 Boats failing to finish within the Time Limit for the last boat will be scored Did Not Finish. This changes rules 35 and A4.1.
- 14.3 The time limits and target times may be specified in *Special Regatta Instructions*

### 15.0 Protests and Requests for Redress

- 15.1 For protests where only a rule of Part 2 or rule 31 is alleged to have been broken, an arbitration hearing may be offered prior to any formal protest hearing. Yachting New Zealand Regulation 4.5.5 will apply. (This changes Rule 44.1)
- 15.2 Protest forms are available at the club entry/reception area. Protests shall be delivered there within the protest time limit.
- 15.3 For each [class] [Division], the protest time limit is 60 minutes after the last boat has finished the last race of the day. The same protest time limit applies to all protests by the race committee and protest committee and to requests for redress. This changes rule 61.3 and 62.2 Protest time limits will be posted.
- 15.4 Notices of protest will be posted within 15 minutes of the protest time limit to inform competitors of hearings in which they are parties or named as witnesses.
- 15.5 Notices of protests by race committee or protest committee will be posted to inform boats under rule 61.1 (b).
- 15.6 For the purpose of rule 64.3 (b) the 'authority responsible' is the measurer appointed by the organising authority.
- 15.7 Breaches of instructions 1.3, 1.4, 1.5, 4.2, 10.5, 10.6, 10.10, 13.3, 17, 18, 20 and 21 will not be grounds for a protest by a boat under rule 60.1(a). This changes rule 60.1(a). Penalties for these breaches may be less than disqualification if the protest committee so decides.
- 15.8 Application of Appendix P will be specified in *Special Regatta Instructions*

## **16.0 Scoring**

- 16.1 The Low Point scoring system of Appendix A will apply unless changed in *Special Regatta Instructions*.
- 16.2 When races are scheduled as a series, one race is required to be completed to constitute the series, unless the number of races required to constitute a series is stated in *Special Regatta Instructions*.
- 16.3 (a) When fewer than 4 races have been completed, a boat's series score will be the total of her race scores.  
(b) When from 4 to 8 races have been completed, a boat's series score will be the total of her race scores excluding her worst score.  
(c) When 9 or more races have been completed, a boat's series score will be the total of her race scores excluding her two worst scores.
- 16.4 The scoring abbreviation for a discretionary penalty given under instruction 15.7 will be DPG.

## **17.0 Safety**

- 17.1 Boats shall sign in before going afloat by completing entry and sign out after being afloat, on the entry and sign out sheet. Boats not hauling out at the Club slipway after racing may sign out with Race Control, using VHF Channel 77.
- 17.2 Trailer Yachts and Keelboats must complete and deposit Crew List forms for Safety Category A and B or Safety Category 3 and 4 races.
- 17.3 A boat that retires from a race shall notify the race committee as soon as possible.

## **18.0 Replacement of Crew or Equipment**

Limitations on replacement of crew or equipment may be specified in *Special Regatta Instructions*

## **19.0 Equipment and Measurement Checks**

A boat or equipment may be inspected at any time for compliance with the class rules, relevant Safety Regulations and sailing instructions. On the water, a boat can be instructed by a race committee measurer to proceed immediately to a designated area for inspection.

## **20.0 Support Boats**

Team leaders, coaches and other support personnel shall stay outside areas where boats are racing from the time of the preparatory signal for the first [class] [Division] to start until all boats have finished or the race committee signals a postponement, general recall or abandonment.

## 21.0 Haul-Out Restrictions

Restrictions on the launching and retrieval of all competing boats and equipment may be specified in *Special Regatta Instructions*

## 22.0 Radio Communication

22.1 A boat shall neither make radio transmissions while racing nor receive radio communications not available to all boats. This restriction also applies to mobile telephones.

22.2 All Keelers at all times and Trailer Yachts in long races shall maintain a listening watch on VHF Channel 77 while racing within Lyttelton Harbour and on VHF Channel 63 while racing outside Lyttelton Harbour. VHF broadcasts to the fleet shall be official notification and may include changes to Sailing Instructions.

## 23.0 Prizes

23.1 Prizes will be as listed in *Special Regatta Instructions*

## 24.0 Disclaimer of Liability

Competitors participate in races entirely at their own risk. See rule 4, Decision to Race. The Organising Authority will not accept any liability for material damage or personal injury or death sustained in conjunction with or prior to, during, or after the regatta.

# Attachment 1

## Eligibility and Entries

1. For a boat to be eligible to compete in Club non-championship events for points and trophies each person in charge (see RRS 46) shall be a financial member of the NPCL. Casual Crew members of NPCL and current Day Members are eligible to sail as crew.
2. Visitors who are not members of NPCL but who are members of other yacht clubs are eligible to sail in NPCL events as "a person in charge", or as crew, but are not eligible for points or the trophies of NPCL or CTYS.
3. All boats must be entered in writing on the entry forms provided by the Club. Illegible or incomplete entries may not be accepted.
4. Trailer Yachts and Keelboats must complete and deposit Crew List forms for TY Safety Category A and B or KB Safety Category 3 and 4 races.
5. Mark Foy entries must be completed 45 minutes before the first start.

# Attachment 2

## Safety Regulations (SR)

As per the yachting New Zealand prescriptions to Rule 85, "Governing Rules", and Appendix J2.1, "Sailing Instruction contents", of the Racing Rules of Sailing, all racing sailors are obliged to meet the following safety criteria before and while racing their boat in regattas and events.

- 1.0 **Unballasted centreboard** and open yachts and sailboards (Dinghy) are bound by Part I of the Yachting New Zealand Safety Regulations.
- 2.0 **Trailer Yachts**, whether racing or cruising, are bound by part V of the Yachting New Zealand Safety Regulations.

- i) Racing inside a line from Godley Head to Baleine Point will be under SR Part V 5.2, Category C.
- ii) Racing which takes boats beyond a line from Godley Head to Baleine Point but inside a line from Ashley River Mouth to Long Lookout Point (Pegasus Bay and Pigeon Bay) will be under SR Part V 5.2, Category B.
- iii) Trailer Yachts sailing beyond these limits shall comply with SR Part V 5.2 Category A.
- iv) Trailer Yacht crews shall remain within the confines of the cockpit except: when changing sails, when lifelines as described in YNZ SR Part V 7.17 are fitted, or when it is specifically permitted by the Class rules.
- v) Personal buoyancy (YNZ approved personal buoyancy aid or lifejacket) shall be worn at all times while racing and it is recommended that they be worn at all times afloat.
- 3.0 **Keelboats**, whether racing or cruising, are bound by Part II of the Yachting New Zealand Safety Regulations (SR).
  - i) Racing inside a line between Godley Head and Baleine Point will be under SR Part II 4.6 Category 5. To be eligible to race the boat owner or skipper must sign a declaration that the boat meets the requirements of Category 5.
  - ii) Racing which takes boats beyond a line between Godley Head and Baleine Point but inside a line between Ashley River Mouth and Long Lookout Point will be under SR Part II 4.5 Category 4. To be eligible to race the boat owner or skipper must sign a declaration that the boat meets the requirements of Category 4.
  - iii) Racing which takes boats beyond a line between Ashley River Mouth and Long Lookout Point will be under SR Part II 4.4 Category 4 with additional requirements specified in the *Special Regatta Instructions*.
- 4.0 **Sports Boats** are bound by Part VI of the Yachting New Zealand Safety Regulations (SR)
  - i) Entries by Sport Boats will only be accepted for races inside a line between Godley Head and Baleine Point, unless a specific safety plan is implemented by the Club.
  - ii) Racing inside a line from Godley to Adderly Heads will be under SR Part VI Category B.
  - iii) Racing which takes boats beyond a line from Godley to Adderly Heads will be under SR Part VI Category A.
- 5.0 Spot SR compliance checks will be carried out by members, or representatives of, the Sailing Committee on boats competing in:
  - Dinghy races
  - Sport Boat Races.
  - Trailer Yacht Category B and C races
  - Keelboat Category 4 and 5 races.

### **Attachment 3**

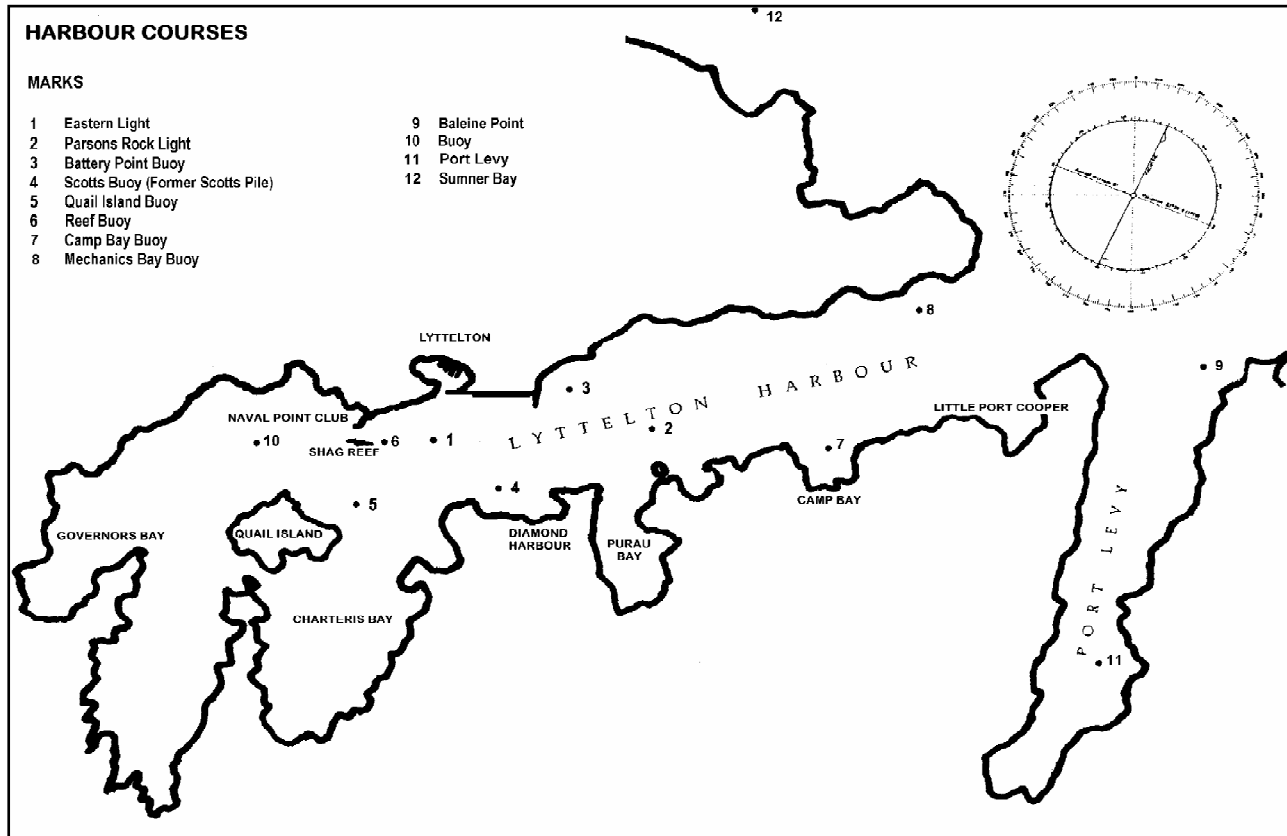
#### **Day Membership**

Sailors, not members of the Club, who are admitted to Daily Membership of the Club under the following conditions:

1. They are recorded on the Day Membership List and
2. Have paid a fee of \$10 (the Blue Fee) for the day.

#### **Casual Crew Membership**

Non boat owner members, who are admitted on application to Daily Membership of the Club, for maximum of two seasons, paying a Casual Crew membership subscription.



## HARBOUR COURSES

### NPCL RACE MARKS

- |                      |                      |
|----------------------|----------------------|
| 1 Eastern Light      | 8 Mechanics Bay Buoy |
| 2 Parsons Rock Light | 9 Baleine Point Buoy |
| 3 Battery Point Buoy | 10 Buoy              |
| 4 Scotts Buoy        | 11 Port Levy         |
| 5 Quail Island Buoy  | 12 Sumner Bay        |
| 6 Reef Buoy          |                      |
| 7 Camp Bay Buoy      |                      |

Note: 2S means Parsons to Starboard  
2P means Parsons to Port

### COURSES

#### COURSES SUITED TO NORTHEASTERLY WINDS

- |     |   |
|-----|---|
| 1*  | Start - 2S - 4S - 1S - 2S - 6S - Finish (7.5)                       |
| 2*  | Start - 2S - 4S - 1S - 2S - 4S - 1P - Finish (8)                    |
| 3#  | Start - 2S - 4S - 1S - 2S - 4S - 1P - 5S - 10S - Finish (13.4)      |
| 4#  | Start - 2S - 4S - 1S - 2S - 1S - 2S - 1P - Finish (11.8)            |
| 5   | Start - 2S - 4S - 1S - 2S - 4S - 1S - 2S - 5S - 10S - Finish (12.5) |
| 6   | Start - 2P - 3P - 4S - 1P - 5P - 4P - 6S - Finish (8.5)             |
| 7   | Start - 2P - 3P - 5P - 2P - 6S - Finish (9.2)                       |
| 8   | Start - 2P - 3P - 4S - 1P - 5P - 2P - 6S - Finish (10.5)            |
| 9   | Start - 2P - 3P - 4S - 1S - 2S - 5S - 10S - Finish (10.5)           |
| 10  | Start - 8S - 2S - 8S - 4S - 6S - Finish (12.5)                      |
| 11  | Start - 8S - 7S - 2S - 8S - 4S - 10S - Finish (15.0)                |
| 12# | Start - 8S - 7S - 2S - 8S - 4S - 6S - Finish (13.0)                 |

13 Start – 8S – 9P – 8P – 2S – 6S – Finish (13.2)

**COURSES SUITED TO NORTHWESTERLY WINDS**

14 Start – 2S – 4S – 1S – 2S – 4S – 1P – Finish (8.0)

15 Start – 10P – 4P – 1S – 2S – 4S – 1P – Finish (8.0)

16 Start – 10P – 5P – 10P – 5P – 1P – Finish (6.0)

**COURSES SUITED TO SOUTHERLY SECTOR WINDS**

17\* Start – 5P – 2P – 5P – 2P – Finish (9.0)

18# Start – 5P – 8S – 2S – 1P – Finish (9.2)

19 Start – 5P – 8S – 2S – 8S – Finish (15.0)

20 Start – 5P – 3P – 5P – 2P – Finish (9.5)

21 Start – 10P – 2S – 5S – 1S – 2S – 4S – 1P – Finish (10.2)

**LONG RACES**

22 Baleine Point  
Start – 9S – Finish (12.8)

23# Start – 8S – 9P – 8P – 7S – 3P – 4S – 1P – Finish (15.1)

24 Start – 8S – 9P – 8P – 2P – 7P – 3P – 4S – 6S – Finish (16.4)

25 Start – 8S – 9S – 2S – 8S – 6S – Finish (17.0)

26 Port Levy  
Start – 9S – 11S – 7S – 2P – 4S – 10S – Finish (20.0)

27 Wakaroa Point  
Start – 8S – Wakaroa Pt P – 8P – 7S – Finish (23.0)

28 Sumner Bay  
Start – 9P – 12S – 9S – 8P – 7S – 2P – 4S – 1P – Finish (22.5)

29 Sumner Bay  
Start – 9P – 12S – 8P – 7S – 2P – 4S – 1P – Finish (21.0)

- \* Indicates courses suited to short handed racing.
- # Indicates courses suited to non spinnaker racing.
- (x) Approximate rhumb line course lengths in nautical miles.

## SPRINT & SHORT COURSES

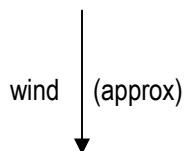
Sprint and short courses will have committee boat starts and will be as near to a windward/leeward course on Lyttelton Harbour as conditions on the day will allow. For courses S1 and S2, marks A and B shall be Orange Spherical Buoys.

S1 Start - A - B - A - Finish

S2 Start - A - B - A - B - A – Finish

All rounding marks are to be rounded to port.

**A**



Approximate distance between A and B:

Short Courses 1 to 1.5 nautical miles  
Sprint Races 0.5 to 1 nautical mile